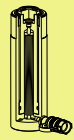


RSC Series



Capacity:
5-100 ton

Stroke:
16-362mm

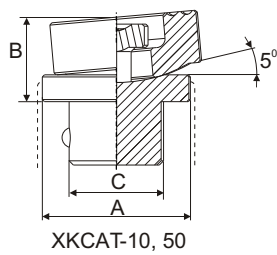
Maximum Operating Pressure:
700 bar

RSC 液壓單動彈簧回縮，外牙式千斤頂

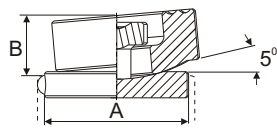
- 液壓缸外螺牙及底座螺孔便於固定。(詳見規範)
- 主軸內螺牙(5ton~30ton)便於安裝於特製工件或設計。
- 主軸上的銅合金圈可預防偏心荷載所造成的刮傷。
- 主軸硬路處理耐磨、抗腐蝕。
- 油缸內壁硬路處理，於高濕度氣候更耐磨、抗腐蝕。
- 防塵環減少污染物附著。
- 上螺帽保護主軸超揚昇及全揚程荷載。
- 表面粉體塗裝美觀抗腐蝕、防銹。
- 外螺牙均含保護套。
- 各型號均含SQB-3/8UF快速接頭及防塵蓋。

Single-Acting, Spring return Collar thread Cylinders

- ※ Equip with collar thread and base holes (on most model), for greater flexibility in mounting onto fixture. (see page 16 for details)
- ※ Equip with inner plunger thread (5 ton to 30 ton) for greater flexibility in designing fixture.
- ※ Bronze alloy bearing on plunger to minimize scoring due to off-centre load.
- ※ Hard chrome plated plunger to resists wear and corrosion.
- ※ Inner barrel wall are hard chrome plated to resists wear and corrosion in high humidity atmosphere.
- ※ Equip with wiper seals to prevent ingress of dirt.
- ※ Equip with stop-ring to prevent plunger blow-out and withstands full "Dead-End" load.
- ※ Powder coated finish for greater corrosion protection.
- ※ Equip with plastic cap to protect collar threads.
- ※ Come with SQB-3/8UF female coupler & dust cap.



XKCAT-10, 50



XKCAT-100

選配墊塊尺寸 Optional Saddle Dimensions (mm)

油壓缸 型號-能力 Cylinder Model/Cap. (ton)	型號 樣式：傾斜墊塊 Model Number Type : Tilt	尺寸 (mm)		
		A	B	C
RSC-10, RSC-15 Except RSC-101	XKCAT-10	35	20	22
RSC-25, RSC-30	XKCAT-50	50	21	35
RSC-50, RSC-75 RSC-100	XKCAT-100	71	24	-



墊塊/鞍座 Saddle

RSC-系列 均配有高硬度可移除式溝槽墊塊於起重時具防滑作用。偏心起重時請選用傾斜墊塊。

RSC-Series are equipped with hardened removable "Ribbed saddles" to prevent slippage during jacking. For off-center loading application, see optional tilting saddle.

	焊提把 Weldable
	吊環螺栓 Eyebolt
	活動提把 Removable strap handles
	螺牙式活動提把 Thread

提把型式 Handle type	
(S)	標準配件 standard equipped
(O)	選配 option
●	焊提把 Weldable
★	吊環螺栓 Eyebolt
▲	活動提把 Removable strap handles
■	螺牙式活動提把 Thread

快速規範 QUICK SELECTION CHART									
提把型式 Handle type	型號 Model Number	能力 Cylinder Capacity	揚程 Stroke	受壓面積 Cylinder Effective Area	總油量 Oil Capacity	本身高 Collapsed Height	主軸內牙 Plunger internal Thread	重量 Weight	
(O) (S)		ton (kN)	(mm)	(cm ²)	(cm ³)	A (mm)	O (in)	(kg)	
	RSC-50	5 (45)	16	6.5	10	41	—*	1.0	
	RSC-51		25	6.5	16	110	3/4"-16	1.0	
	RSC-53		76	6.5	50	165	3/4"-16	1.5	
	RSC-55		127	6.5	83	215	3/4"-16	1.9	
	RSC-57		177	6.5	115	273	3/4"-16	2.4	
	RSC-59	232	6.5	151	323	3/4"-16	2.8		
	RSC-101	10 (101)	26	14.5	38	89	#10-24UN	1.8	
	RSC-102		54	14.5	78	121	1"-8	2.3	
	RSC-104		105	14.5	152	171	1"-8	3.3	
	RSC-106		156	14.5	226	247	1"-8	4.4	
	RSC-108		203	14.5	294	298	1"-8	5.4	
	RSC-1010		257	14.5	373	349	1"-8	6.4	
	RSC-1012		304	14.5	441	400	1"-8	6.8	
	RSC-1014		356	14.5	516	450	1"-8	8.2	
	RSC-151		15 (142)	25	20.3	51	124	1"-8	3.3
	RSC-152			51	20.3	104	149	1"-8	4.1
	RSC-154	101		20.3	205	200	1"-8	5.0	
	RSC-156	152		20.3	308	271	1"-8	6.8	
	RSC-158	203		20.3	411	322	1"-8	8.2	
	RSC-1510	254		20.3	516	373	1"-8	9.5	
	RSC-1512	305		20.3	619	423	1"-8	10.9	
	RSC-1514	356		20.3	723	474	1"-8	11.8	
	RSC-251	25 (232)	26	33.2	86	139	1 1/2"-16	5.9	
	RSC-252		50	33.2	166	165	1 1/2"-16	6.4	
	RSC-254		102	33.2	339	215	1 1/2"-16	8.2	
	RSC-256		158	33.2	525	273	1 1/2"-16	10.0	
	RSC-258		210	33.2	697	323	1 1/2"-16	12.2	
	RSC-2510		261	33.2	867	374	1 1/2"-16	14.1	
	RSC-2512		311	33.2	1033	425	1 1/2"-16	16.3	
	RSC-2514		362	33.2	1202	476	1 1/2"-16	17.7	
	RSC-308		30(295)	209	42.1	880	387	—	18.1
	RSC-502		50 (498)	51	71.2	362	176	—	15.0
■	RSC-504	101		71.2	719	227	—	19.1	
■	RSC-506	159		71.2	1131	282	—	23.1	
▲	RSC-5013		337	71.2	2399	460	—	37.6	
▲	RSC-756	75 (718)	156	102.6	1601	285	—	29.5	
▲	RSC-7513		333	102.6	3417	492	—	59.0	
▲ ●	RSC-1004	100 (933)	102	133.3	1355	204	—	33.1	
▲ ★	RSC-1006		168	133.3	2239	357	—	59.0	
▲ ★	RSC-1008		203	133.3	2709	357	—	59.0	
▲ ★	RSC-10010		260	133.3	3466	449	—	72.6	



RSC-25噸 復軌實例應用
RSC-25 ton rail way application



RSC & 泵浦特殊訂製
RSC & Pump -specific purpose

* RSC-50油壓缸具不可拆卸溝槽墊塊且無外螺牙
RSC-50 cylinder has non-removable grooved saddle and no collar thread.

