

## SPE-200RINC- 超高壓電動泵浦

- 無刷馬達噪音更低、體積輕巧。適合於配套螺栓拉伸器、造船、風電等現場作業。
- 特殊馬達研發，產品更耐久，使用壽命更延長。
- 外部調壓更易操作。
- 壓力到達則馬達自動停止且持壓。
- 高低壓二段式自動切換，系統效率高。

### High Pressure Hydraulic Electric Pump

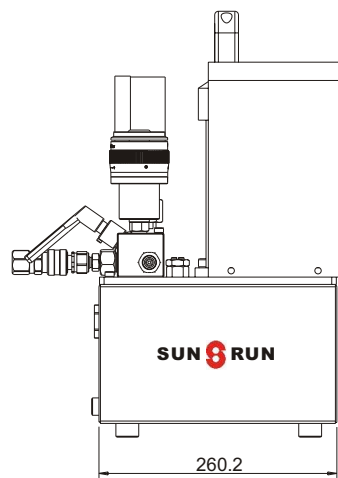
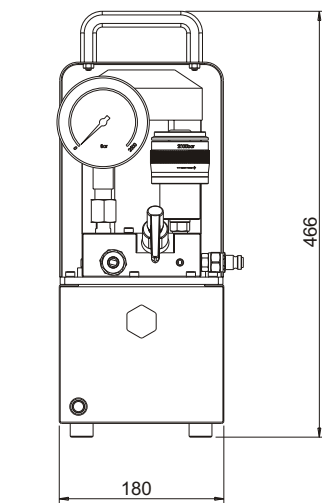
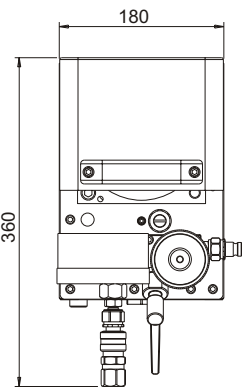
- ※ The adoption of a brushless motor reduces the noise remarkably. Lightweight, compact, and easy to transport. Ideal for site work such as bolt tensioner work, shipyard and civil engineering construction.
- ※ The durability has been improved while the performances are maintained.
- ※ Equipped pressure switch more easy to control.
- ※ Motor auto stop working and hold pressure as reach setting pressure.
- ※ Automatic high-low pressure switching for improved work efficiency.

\*壓力錶以及壓力開關為SPE-200RINC-專用，如需搭配其它系列產品混用請諮詢本公司。

\*The pressure gauge and switch are exclusive to the SPE-200RINC-series. Consult us when them with otherseries.

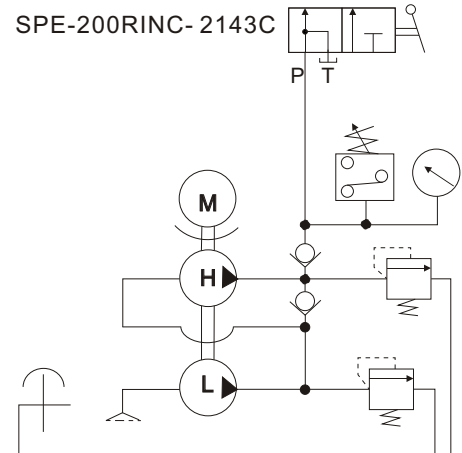


SPE-200RINC-



電泵型號選擇：Custom build your Electric Pump:  
**SPE-200RINC-2 1 4 3 C**

1.馬達 200RI=0.625HP(0.5kw)	1.Voltage 200RI=0.625HP(0.5kw)
2.電壓/安培 1=110V/12A 2=220V/7A	2.Voltage/A 1=110V/12A 2=220V/7A
3.相數 1=1ph	3.Phase 1=1ph
4.油箱 4=4L	4.Reservoir 4=4L
5.閥門樣式 3=手動三口二位控制閥	5.Valve 3=3way/ 2position Manual Valve
6.配件 C=線控裝置 G=油壓錶	6.fitting C=Remote control G=Pressure Gauge



型號 Model Number	馬達 Motor kW/(hp)	最大使用壓力 Max.Pressure (psi)/(bar)	輸出壓力 Pressure Rating (psi)/(bar)		輸出油量 Output flow rate (L/min)		重量 (含油) Weight (include oil) (kg)
			1 <sup>st</sup> stage	2 <sup>nd</sup> stage	1 <sup>st</sup> stage	2 <sup>nd</sup> stage	
SPE-200RINC-	0.5(1.5)	29,000(2000)	435(30)	29,000(2000)	2	0.1	19

## SPE-2000RI- 電動油壓泵浦

- 採用高效能軸心活塞式泵浦，可有效於壓力變換時減少能量損失。
- 壓力開關及安全閥，雙安全機制預防超壓使用。
- 可外部調壓，出廠已預設壓力上限確保系統超荷使用。
- 附易讀值油位計。
- 全罩式散熱馬達，可適用於戶外操作環境。

### High Pressure Hydraulic Electric Pump

- ※ Pump adopting a high-performance axial piston system and greatly reducing the change in the discharge volume caused by the pressure fluctuation.
- ※ Equipped with a double safe mechanism of the safety valve and the pressure switch to prevent an overload.
- ※ User adjustable external relief valve with a factory set upper limit prevents system overload.
- ※ Easy to read integrated oil level sight glass.
- ※ Totally enclosed fan-cooled motors are ideal for outdoor use in many environments.



Model Number 型號	Motor 馬達 kW/(hp)	Insulation 絕緣	Flow Rate H.P./L.P 輸出流量 高壓/低壓 (L/min)		Pressure Rating 輸出壓力 (bar)	Rpm 轉速		Weight (22L tank no oil) 重量 (kg)
			50Hz	60Hz		50Hz	60Hz	
SPE-2000RI2	1.5/(2)	E class Totally enclosed fan-cooled	8.3/ 0.35	10/ 0.42	2000	1500	1800	110
SPE-2000RI5	3.7/(5)	E級 全閉外扇	-/ 0.9	-/ 1.08				

※ 型錄標示重量及尺寸為22L空油箱範例，其他油箱高度及重量依實品略有不同。  
 Product weight and reservoir high will be changed by different reservoir.  
 Catalog sample is 22L no oil reservoir.

電動泵浦基本閥型 BASIC PUMP VALVE	適用油壓缸 Used with cylinder		閥作用 Valve Function	
	↑	↓	↑	↓
手動三口方向閥 Manual 3 way Valve	●	●	●	●
手動四口方向閥 Manual 4 way Valve	●	●	●	●

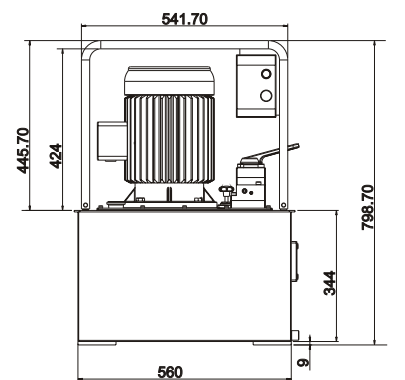
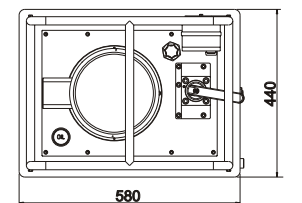
## SPE-2000RI-Series

Reservoir Capacity: 22L
Flow at rated pressure: 0.35-1.08 L
Motor Size: 1.5、3.7kW (2、5 hp)
Maximum Operating Pressure: 1600-2000 bar

電泵型號選擇：Custom build your Electric Pump:

**SPE-2000RI5-2 6 3 20 3**

- |  |   |
|--|---|
| 1.馬達<br>2000RI2=2HP(1.5kw)<br>2000RI5=5HP(3.7kw)                       | 1.Voltage<br>2000RI2=2HP(1.5kw)<br>2000RI5=5HP(3.7kw)   |
| 2.電壓<br>2=220V-4P  | 2.Voltage<br>2=220V   |
| 3.Hz<br>5=50Hz<br>6=60Hz   | 3.Hz<br>5=50Hz<br>6=60Hz  |
| 4.相數<br>3=3ph  | 4.Phase<br>3=3ph  |
| 5.油箱<br>20=20L   | 5.Reservoir<br>22=22L   |
| 6.閥門樣式<br>3=手動三口控制閥<br>(最大工作壓力2000bar)<br>4=手動四口控制閥<br>(最大工作壓力1600bar) | 6.Valve<br>3=3way Manual Valve<br>(Max.Operating Pressure 2000bar)<br>4=4way Manual Valve<br>(Max.Operating Pressure 1600bar) |
| 7.選配<br>C=線控裝置<br>W=輪子   | 7.Optional<br>C=Remote control<br>W=Wheel   |



SPE-2000RI2-263223

