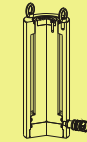


CSLSG Series



Capacity:
50-1,000 ton

Stroke:
50-300 mm

Maximum Operating Pressure:
700 bar

CSLSG 液壓單動，高噸位千斤頂

- CSLSG系列均具底座螺孔。
- 單動重力回縮。
- 主軸及液壓缸內壁硬鉻處理耐磨、抗腐蝕。
- 防塵環減少污染物附著。
- 整體性上螺帽保護主軸超揚程。
- 表面粉體塗裝美觀抗腐蝕、防銹。
- 各型號均含SQB-3/8UF快速接頭及防塵蓋。

Single-Acting, High Tonnage Cylinders

- ※Base mounting holes standard on all models.
- ※Single-acting, load return
- ※Hard chrome plated plunger and inner of barrel resists wear and corrosion.
- ※Plunger wiper reduces contamination, extending cylinder life.
- ※Integral stop ring provides piston blow-out protection
- ※Powder coat finish for increased corrosion resistance and antirust.
- ※Come with SQB-3/8UF female coupler & dust cap.



墊塊/鞍座 Saddle

- CSLSG-系列 均配有高硬度可移除式溝槽墊塊於起重時具防滑作用。偏心起重時請選用傾斜墊塊。
- 選配之傾斜墊塊請參閱選擇對照資訊。

※ CSLSG-Series are equipped with hardened removable "Ribbed saddles" to prevent slippage during jacking. For off-center loading application, see optional tilting saddle.

※ For information on optional tilt saddles, see selection chart.

油壓缸能力選擇 Cylinder Capacity

- 高於1000 噸以上油壓缸亦提供製造。
- 請將您在舉昇系統中所需要的協助和相關技術資訊與就近的SUN RUN服務中心取得連繫。

※ More above 1000 tons cylinder capacity are also available.

※ Please contact SUN RUN office nearest to you for advice and technical assistance in the layout of your ideal Lift System.

大噸數、低高度時 Low Height-High Tonnage

- 當初次使用於空間受限環境時，同時需要大噸位數能力，而高度低的油壓缸時，扁平鎖帽型千斤頂提供更優質的選擇。

※ When low height with high force is required, load return with lock ring Cyl. Offer the solution to lift the first few inches.

底座螺孔方位 Mounting Hole Direction

- 上方底座螺孔依據油孔位置設定方位。
- 下方底座螺孔則依本廠設計設定方位。

※ Top mounting hole orientation is maintained to port location.

※ Bases mounting hole orientation is not maintained to port location.

提把型式 Handle type	
(S) : 標準配件 standard equipped	
(O) : 選配 option	
● 焊提把 Weldable	
★ 吊環螺栓 Eyebolt	
▲ 活動提把 Removable strap handles	
■ 螺牙式活動提把 Thread	

	焊提把 Weldable
	吊環螺栓 Eyebolt
	活動提把 Removable strap handles
	螺牙式活動提把 Thread



選配說明

假如您需要選配其他要求於您所訂製的千斤頂油壓缸上，請依下列規範字尾增加編號

油缸外牙：CT

案例：

CSLSG-502選配油缸外牙，訂製型號改為CSLSG-502CT相關技術諮詢請與SUN RUN取得聯繫。

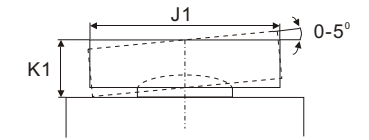
Opt Features

To add optional features to order cylinder, add follow suffixes to the end of the model No..

Collar Thread : CT

Example :

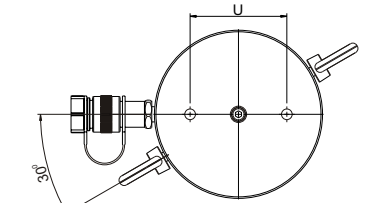
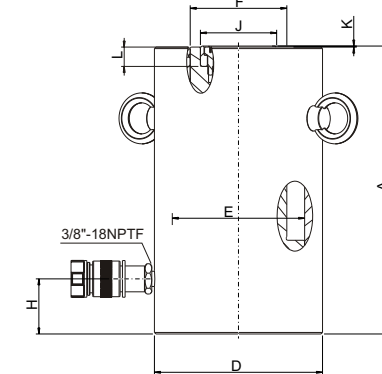
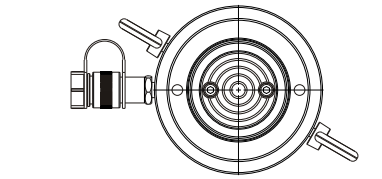
CSLSG-502 with collar thread, order:CSLSG-502CT. Technical specifications for these features are available from SUN RUN.



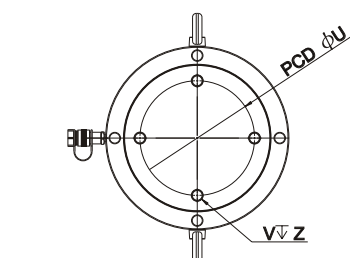
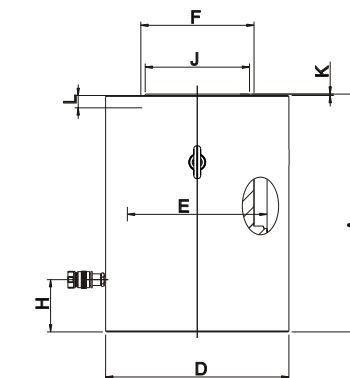
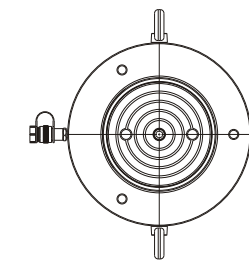
提把型式 Handle type	型號 Model Number	能力 Cylinder Cap. ton(kN)	揚程 Stroke (mm)	受壓面積 Effective Area (cm ²)	本身高 Coll. Height A (mm)	重量 Weight (kg)	選配傾斜墊塊 Optional Tilt Saddle		
							型號 Model Number	直徑 Diam. J1(mm)	高度 Height K1(mm)
(S)									
★	CSLSG-502	50 (539)	50	77.0	162	17	XKCATG-50	50	24
★	CSLSG-504		100	77.0	212	20	XKCATG-50	50	24
★	CSLSG-506		150	77.0	262	23	XKCATG-50	50	24
★	CSLSG-508		200	77.0	312	27	XKCATG-50	50	24
★	CSLSG-5010		250	77.0	362	31	XKCATG-50	50	24
★	CSLSG-5012		300	77.0	412	34	XKCATG-50	50	24
★	CSLSG-1002	100 (929)	50	132.7	182	19	XKCATG-100	73	29
★	CSLSG-1004		100	132.7	232	29	XKCATG-100	73	29
★	CSLSG-1006		150	132.7	282	40	XKCATG-100	73	29
★	CSLSG-1008		200	132.7	332	50	XKCATG-100	73	29
★	CSLSG-10010		250	132.7	382	61	XKCATG-100	73	29
★	CSLSG-10012		300	132.7	432	71	XKCATG-100	73	29
★	CSLSG-1502	150 (1390)	50	198.6	196	39	XKCATG-150	91	31
★	CSLSG-1504		100	198.6	246	52	XKCATG-150	91	31
★	CSLSG-1506		150	198.6	296	65	XKCATG-150	91	31
★	CSLSG-1508		200	198.6	346	78	XKCATG-150	91	31
★	CSLSG-15010		250	198.6	396	92	XKCATG-150	91	31
★	CSLSG-15012		300	198.6	446	105	XKCATG-150	91	31
★	CSLSG-2002	200 (1861)	50	265.9	216	68	XKCATG-200	113	35
★	CSLSG-2006		150	265.9	316	91	XKCATG-200	113	35
★	CSLSG-20012		300	265.9	466	146	XKCATG-200	113	35
★	CSLSG-2502	250 (2565)	50	366.4	235	102	XKCATG-250	144	46
★	CSLSG-2506		150	366.4	335	136	XKCATG-250	144	46
★	CSLSG-25012		300	366.4	485	207	XKCATG-250	144	46
★	CSLSG-3002	300 (3193)	50	456.2	312	184	XKCATG-300	160	62
★	CSLSG-3006		150	456.2	412	232	XKCATG-300	160	62
★	CSLSG-30012		300	456.2	562	303	XKCATG-300	160	62
★	CSLSG-4002	400 (3919)	50	559.9	375	270	XKCATG-400	193	51
★	CSLSG-4006		150	559.9	475	330	XKCATG-400	193	51
★	CSLSG-40012		300	559.9	625	421	XKCATG-400	193	51
★	CSLSG-5002	500 (5114)	50	730.6	419	401	XKCATG-500	228	63
★	CSLSG-5006		150	730.6	519	480	XKCATG-500	228	63
★	CSLSG-50012		300	730.6	669	599	XKCATG-500	228	63
★	CSLSG-6002	600 (5987)	50	855.3	429	474	XKCATG-600	241	76
★	CSLSG-6006		150	855.3	529	565	XKCATG-600	241	76
★	CSLSG-60012		300	855.3	679	701	XKCATG-600	241	76
★	CSLSG-8002	800 (8234)	50	1176.3	474	741	XKCATG-800	287	75
★	CSLSG-8006		150	1176.3	574	880	XKCATG-800	287	75
★	CSLSG-80012		300	1176.3	724	1058	XKCATG-800	287	75
★	CSLSG-10002	1000 (10260)	50	1465.7	564	1062	XKCATG-1000	311	93
★	CSLSG-10006		150	1465.7	664	1213	XKCATG-1000	311	93
★	CSLSG-100012		300	1465.7	814	1439	XKCATG-1000	311	93

型號 Model Number	能力 Cylinder Cap. ton(kN)	外部尺寸 Outer Dimension									
		揚程 Stroke (mm)	受壓面積 Effective Area (cm ²)	總油量 Oil Cap. (cm ³)	本身高 Coll. Height A (mm)	伸長總高 Ext. Height (mm)	外徑 Outside Diam. D (mm)	內徑 Bore Diam. E (mm)	主軸直徑 Plunger Diam. F (mm)	底部前進油孔位置 Base to Advance Port H (mm)	墊塊直徑 Standard Saddle Diam. J (mm)
CSLSG-502	50 (539)	50	77.0	385	162	212	130	98.6	70.0	42	50
CSLSG-504		100	77.0	770	212	312	130	98.6	70.0	42	50
CSLSG-506		150	77.0	1155	262	412	130	98.6	70.0	42	50
CSLSG-508		200	77.0	1540	312	512	130	98.6	70.0	42	50
CSLSG-5010		250	77.0	1924	362	612	130	98.6	70.0	42	50
CSLSG-5012		300	77.0	2309	412	712	130	98.6	70.0	42	50
CSLSG-1002	100 (929)	50	132.7	664	182	232	165	130.0	95.0	54	75
CSLSG-1004		100	132.7	1327	232	332	165	130.0	95.0	54	75
CSLSG-1006		150	132.7	1991	282	432	165	130.0	95.0	54	75
CSLSG-1008		200	132.7	2655	332	532	165	130.0	95.0	54	75
CSLSG-10010		250	132.7	3318	382	632	165	130.0	95.0	54	75
CSLSG-10012		300	132.7	3982	432	732	165	130.0	95.0	54	75
CSLSG-1502	150 (1390)	50	198.6	993	196	246	205	159.0	114.0	61	94
CSLSG-1504		100	198.6	1986	246	346	205	159.0	114.0	61	94
CSLSG-1506		150	198.6	2978	296	446	205	159.0	114.0	61	94
CSLSG-1508		200	198.6	3971	346	546	205	159.0	114.0	61	94
CSLSG-15010		250	198.6	4964	396	646	205	159.0	114.0	61	94
CSLSG-15012		300	198.6	5957	446	746	205	159.0	114.0	61	94
CSLSG-2002	200 (1861)	50	265.9	1330	216	266	235	184.0	133.0	67	113
CSLSG-2006		150	265.9	3989	316	466	235	184.0	133.0	67	113
CSLSG-20012		300	265.9	7977	466	766	235	184.0	133.0	67	113
CSLSG-2502	250 (2565)	50	366.4	1832	235	285	275	216.0	165.0	73	145
CSLSG-2506		150	366.4	5497	335	485	275	216.0	165.0	73	145
CSLSG-25012		300	366.4	10993	485	785	275	216.0	165.0	73	145
CSLSG-3002	300 (3193)	50	456.2	2281	312	362	310	241.0	197.0	101	177
CSLSG-3006		150	456.2	6843	412	562	310	241.0	197.0	101	177
CSLSG-30012		300	456.2	13685	562	862	310	241.0	197.0	101	177
CSLSG-4002	400 (3919)	50	559.9	2800	375	425	350	267.0	216.0	114	196
CSLSG-4006		150	559.9	8399	475	625	350	267.0	216.0	114	196
CSLSG-40012		300	559.9	16797	625	925	350	267.0	216.0	114	196
CSLSG-5002	500 (5114)	50	730.6	3653	419	469	400	305.0	248.0	114	228
CSLSG-5006		150	730.6	10959	519	669	400	305.0	248.0	114	228
CSLSG-50012		300	730.6	21918	669	969	400	305.0	248.0	114	228
CSLSG-6002	600 (5987)	50	855.3	4276	429	479	430	330.0	267.0	114	247
CSLSG-6006		150	855.3	12829	529	679	430	330.0	267.0	114	247
CSLSG-60012		300	855.3	25659	679	979	430	330.0	267.0	114	247
CSLSG-8002	800 (8234)	50	1176.3	5881	474	524	505	387.0	317.0	149	297
CSLSG-8006		150	1176.3	17644	574	724	505	387.0	317.0	149	297
CSLSG-80012		300	1176.3	35288	724	1024	505	387.0	317.0	149	297
CSLSG-10002	1000 (10260)	50	1465.7	7329	564	614	560	432.0	343.0	174	323
CSLSG-10006		150	1465.7	21986	664	814	560	432.0	343.0	174	323
CSLSG-100012		300	1465.7	43972	814	1114	560	432.0	343.0	174	323

外部尺寸 Outer Dimension			底座螺孔 Base Mounting Holes		
突出高度 Saddle Protrusion from Plngr. K (mm)	主軸孔深度 Depth of Plunger Hole L (mm)	重量 Weight (kg)	底座孔距 Bolt Cir. Diam. U (mm)	底座螺紋 Thread V (mm)	螺紋深度 Thread Depth Z (mm)
1	19	17	65	M12	22
1	19	20	65	M12	22
1	19	23	65	M12	22
1	19	27	65	M12	22
1	19	31	65	M12	22
1	19	34	65	M12	22
1	19	19	95	M12	22
1	19	29	95	M12	22
1	19	40	95	M12	22
1	19	50	95	M12	22
1	19	61	95	M12	22
1	19	71	95	M12	22
1	19	39	130	M12	22
1	19	52	130	M12	22
1	19	65	130	M12	22
1	19	78	130	M12	22
1	19	92	130	M12	22
1	19	105	130	M12	22
1	24	68	165	M12	22
1	24	91	165	M12	22
1	24	146	165	M12	22
1	24	102	190	M12	22
1	24	136	190	M12	22
1	24	207	190	M12	22
1	19	184	180	M16	36
1	19	232	180	M16	36
1	19	303	180	M16	36
3	27	270	205	M16	36
3	27	330	205	M16	36
3	27	421	205	M16	36
3	27	401	250	M24	38
3	27	480	250	M24	38
3	27	599	250	M24	38
3	27	474	275	M24	38
3	27	565	275	M24	38
3	27	701	275	M24	38
3	27	741	330	M24	38
3	27	880	330	M24	38
3	27	1058	330	M24	38
3	27	1062	375	M24	38
3	27	1213	375	M24	38
3	27	1439	375	M24	38



CSLSG-50 to CSLSG-150 models



CSLSG-200 to CSLSG-1000 models