

SPAT

單提氣動泵浦
Portable Air Pump



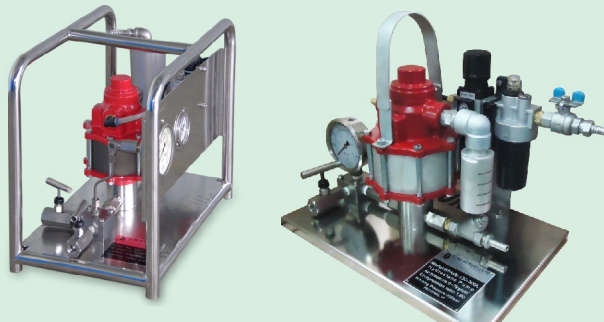
SPAQ

框架型氣動泵浦
Frame Air Pump



SPAW

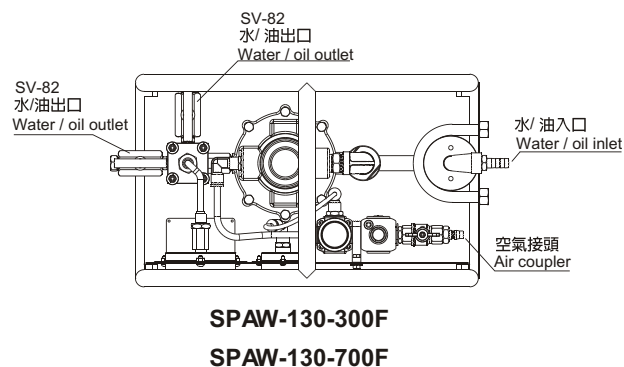
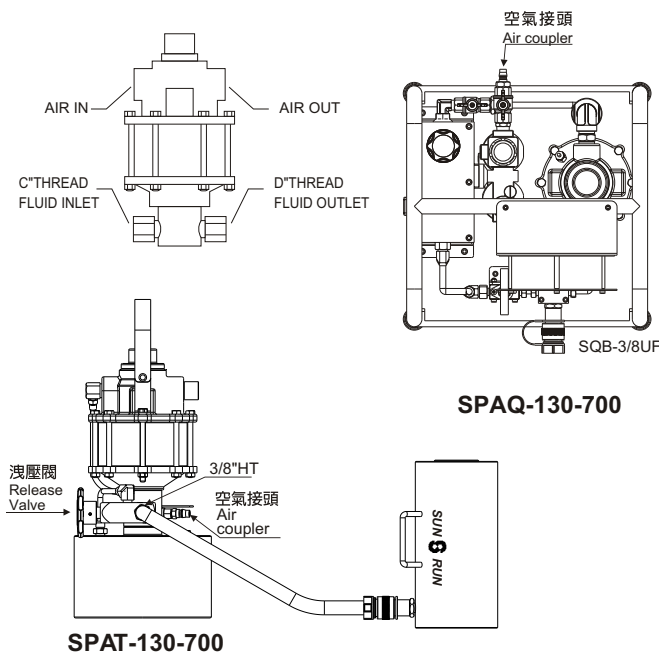
試水泵浦
Hydrostatic Pump



框架型 Steel frame 標準型 Standard type

- 不銹鋼底座及框架。
 - 便於提攜。
- ※Steel base and frame.
※Easy to carry.

- 具三點組合、濾水調壓、自動潤滑、洩壓閥。
 - 具進水過濾器，過濾雜質保護機體。
 - 不銹鋼底座。
 - 液體可為水或液壓油。
- ※Air units (F.R.L.Unit) provide filter, regulator and lubricate
※Input water filter which provide protect.
※Steel base.
※Liquid can be oil or water.



說明 Description	型號 Model Number	壓縮比 Compress Ratio	出油量 Output oil (cm ³ /per stroke)	工作壓力 Work press. (bar)	使用空壓 Air press. (kgf/cm ²)	儲油量 Equipped reservoir (c.c)	重量 Weight (kg)	外型尺寸 Dimensions		
								C	D	(mm)
單提型 Portable	SPAT-130-700	1:150	3.1	700	5~7	2000	17.7	—	1/2"PT-14	∅220x420L
單提型 Portable	SPAT-130-700-4K	1:150	2.5	700	5~7	4000	12	—	1/2"PT-14	∅220x530L
不銹鋼框架 Steel Frame	SPAQ-130-700F	1:150	2.5	700	5~7	5600	25	1/4PT-19	9/16-18UNF	400*400*420
不銹鋼框架 Steel Frame	SPAQ-180-700F	1:117	12.5	700	5~7	5600	28	1/4PT-19	9/16-18UNF	500*500*520
標準型 Standard type	SPAW-130-300L	1:60	6.4	300	5~7	—	15.7	1/4PT-19	9/16-18UNF	650*300*300
不銹鋼框架 Steel Frame	SPAW-130-300F	1:60	6.4	300	5~7	—	18.0	1/4PT-19	9/16-18UNF	500*300*420
不銹鋼框架 Steel Frame	SPAW-130-700F	1:150	2.5	700	5~7	—	18.0	1/4PT-19	9/16-18UNF	

※油箱可以需求訂製
※Reservoir will be changed by user.

※重量及外型尺寸依油箱改變
※Weight and dimension will be changed by reservoir alter.

SPA-554TQJ 氣動油壓泵浦

- 兩段式高效能泵浦。
- 空氣驅動壓力3~8bar。
- 最大輸出壓力：700bar。
- 外部調壓。
- 4hp強力馬達。
- 內建式回油釋放閥保護油壓工件。
- 適用於各種液壓舉升工具。
- 不銹鋼框架便於提運。

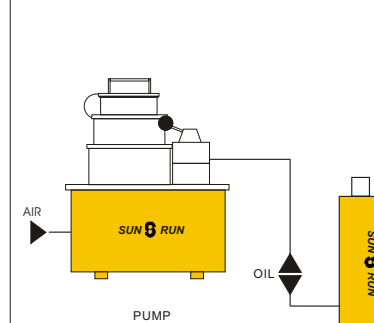
Hydraulic Air Pump

- ※2-speed pump drives single -or double-acting cylinders, delivering a high volume of oil.
- ※Air is the preferred source of power which supply require 3~8bar.
- ※Max.Pressure : 700bar.
- ※External adjustable pressure regulator
- ※Powerful 4 hp motor starts under load.
- ※Retract side internal relief valve protects tool.
- ※Just use with Hydraulic lift applications.
- ※Stainless frame easy to carry.



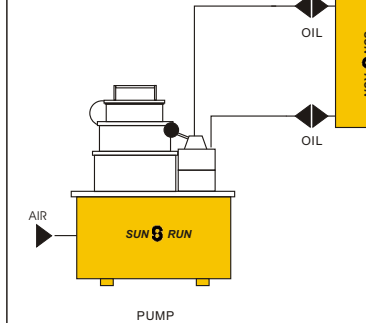
典型配置 單動油壓缸配置

Typical Set-up
Hook-up for single-acting cylinders.



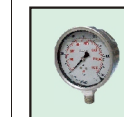
典型配置 雙動油壓缸配置

Typical Set-up
Hook-up for double-acting cylinders.



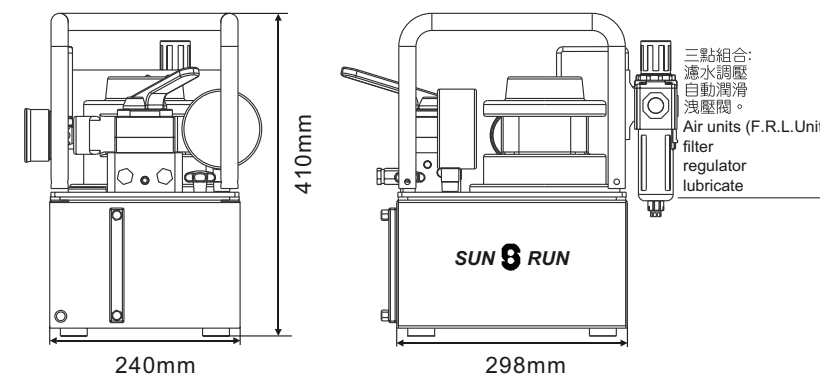
選配

Pressure Gauge



G=充油式壓力錶
Pressure Gauge

泵浦基本閥型 BASIC PUMP VALVE	適用油壓缸 Used with cylinder		閥作用 Valve Function		
	單動缸 Single-acting	雙動缸 Double-acting	上升 Up	下降 Down	中斷 Stop
手動三口方向閥 Manual 3 way Valve	●	●	●	●	●
手動四口方向閥 Manual 4 way Valve	●	●	●	●	●



型號 Model Number	泵浦速度 Pump Type	噪音值 dBA at Idle and 700bar	馬達 Motor kW (hp)	適用油壓缸 Used with cyl.	流量 Flow rate @115VAC(L/min)				油箱 Oil tank (L)	重量 Weight (with oil) (kg)
					0 (bar)	50 (bar)	350 (bar)	700 (bar)		
SPA-554TQJ	雙速 TWO-Speed	85/90	2.2 (4)	單動或雙動 Single- and Double Acting	12.0	7.1	2.0	0.9	8	27.5