

BATTERY TORQUE WRENCHES



The new **EGATORK** battery-powered torque wrenches are ideal for places with reduced accessibility, allowing a comfortable and ergonomic tightening without effort for the technician.

Especially suitable for fast and precise tightening of medium-high torque bolts / nuts.

The wide range of reaction arms gives it great flexibility of use and the lithium battery allows its use in remote areas without the need for an external power supply.

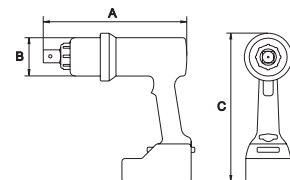


It ensures the desired tightening torque during the entire charge of the battery!!

1. Easy to use and handling.
2. High-powered portable tools up to 8133 Nm.
3. Easy torque control thanks to its built-in display.
4. Latest generation lithium battery fully charged in 1 hour.
5. Integrated arm to avoid over efforts of the operator.
6. Multiple accessories available for increasing flexibility and safety.

BATTERY TORQUE WRENCHES

| COD. | AF inch | N.m | A (mm) | B (mm) | C (mm) | Kg | |
|-------|---------|-----------|--------|--------|--------|-----|---|
| 58875 | 3/4 | 165-670 | 225 | 65 | | 4,5 | |
| 58876 | | 340-1350 | 280 | 75 | | 6,5 | |
| 58877 | 1 | 670-2700 | 295 | 80 | 265 | 7,0 | 1 |
| 58878 | | 1050-4050 | 355 | 95 | | 10 | |
| 58901 | 1.1/2 | 1626-8133 | 380 | 130 | 290 | 20 | |



12M

Battery and standard reaction arm included

It ensures the desired tightening torque during the entire charge of the battery

| TECHNICAL SPECIFICATION | |
|-------------------------|-------------|
| Calibration certificate | ● |
| Reversible | ● |
| Integrated arm | ● |
| Unit selection | N.m / Lb.ft |
| Batteries | Li-ion 18V |
| Charge time | 60 minutes |

12M 12 MONTHS OF WARRANTY

ACCESSORIES

BATTERY

| COD. | Description | V |
|--------------|-------------|----------------|
| 58879 | Battery | 18V 8.0Ah LiHD |

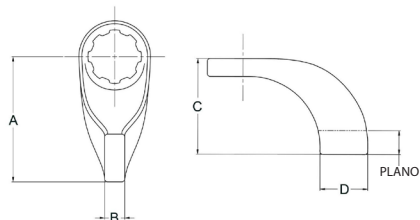


CHARGER

| COD. | Description |
|--------------|----------------------------|
| 58880 | U.S. fast charger |
| 58881 | U.S. standard charger |
| 58882 | U.K. standard fast charger |
| 58883 | Australia fast charger |
| 58884 | Australia standard charger |
| 58885 | EU fast charger |
| 58886 | EU standard charger |



STANDARD REACTION ARM

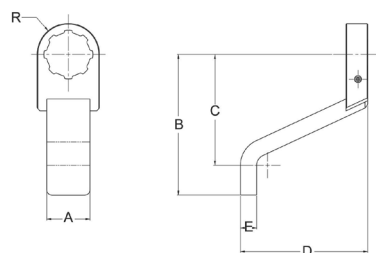


Arm included with the torque wrench.

| COD. | Valid for | A (mm) | B (mm) | C (mm) | D (mm) | Plano |
|--------------|--------------|--------|--------|--------|--------|-------|
| 59026 | 58875, 58876 | 109 | 16 | 92 | 44 | 25 |
| 59027 | 58877, 58878 | 133 | 21 | 101 | 51 | 25 |
| 59028 | 58901 | 203 | 32 | 184 | 76 | 38 |



S REACTION ARM

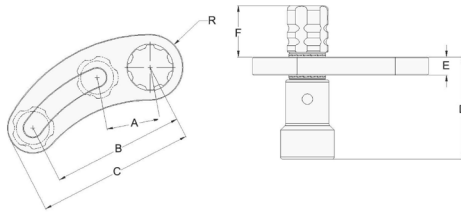


This arm provides a longer reach for reaction point. It works with deepwell sockets.

| COD. | Valid for | A (mm) | B (mm) | C (mm) | D (mm) | E (mm) | R (mm) |
|--------------|--------------|--------|--------|--------|--------|--------|--------|
| 59029 | 58875, 58876 | 38,1 | 139,7 | 110,7 | 143,0 | 16,0 | 31,8 |
| 59030 | 58877, 58878 | 50,8 | 165,1 | 130,0 | 149,4 | 19,5 | 44,4 |
| 59031 | 58901 | 57,2 | 203,2 | 127,0 | 209,6 | 25,4 | 50,8 |



SOCKET REACTION ARM

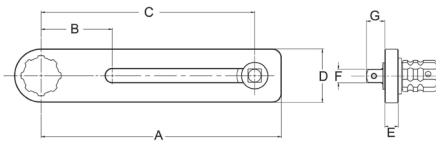


Allows the operator to react against the adjacent nut using a cup to protect it, allowing the adjustment of the distance between socket and the square drive of the tool.

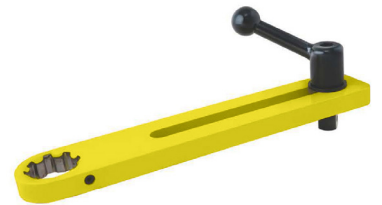


| COD. | Valid for | A (mm) | B (mm) | C (mm) | D (mm) | E (mm) | F (mm) | R (mm) |
|--------------|--------------|--------|--------|--------|--------|--------|--------|--------|
| 59032 | 58875, 58876 | 57 | 140 | 167 | 108 | 19 | 54 | 35 |
| 59033 | 58877, 58878 | | | 171 | 114 | 25 | 48 | 38 |

SOCKET LONG REACTION ARM

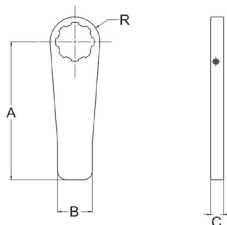


This arm allows the operator to use a socket type reaction. The drive/cup design protects the adjacent nut from direct reaction and is adjustable from 4" to 12".



| COD. | Valid for | A (mm) | B (mm) | C (mm) | D (mm) | E (mm) | F (inch) | G (mm) |
|--------------|--------------|--------|--------|--------|--------|--------|----------|--------|
| 59034 | 58875, 58876 | 330,2 | 101,6 | 304,8 | 63,5 | 19,05 | ¾ | 23,24 |
| 59035 | 58877, 58878 | 342,9 | | | 76,2 | 25,4 | 1 | 32,2 |
| 59036 | 58901 | 361,95 | 114,3 | | 114,3 | 31,75 | 1.1/2 | 36,53 |

STRAIGH REACTION ARM

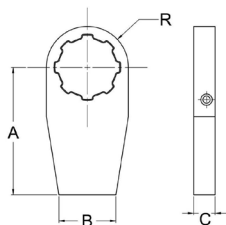


This arm is designed to accommodate a reaction point at a 90 degree angle from the drive.



| COD. | Valid for | A (mm) | B (mm) | C (mm) | R (mm) |
|--------------|--------------|--------|--------|--------|--------|
| 59037 | 58875, 58876 | 152,4 | 31,8 | 16,0 | 31,8 |
| 59038 | 58877, 58878 | 203,2 | 50,8 | 19,1 | 36,6 |
| 59039 | 58901 | 254 | 57,15 | 31,8 | 50,8 |

REACTION ARM FOR WELDING



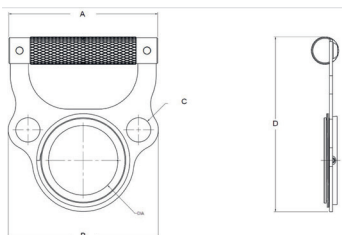
This reaction arm is made of raw steel and allows the customer to fabricate their own custom arm.

| COD. | Valid for | A (mm) | B (mm) | C (mm) | R (mm) |
|--------------|---------------------|--------|--------|--------|--------|
| 59053 | 58875 | 114,3 | 38,1 | 19,05 | 31,75 |
| 59054 | 58876, 58877, 58878 | | 50,8 | 25,40 | 36,3 |
| 59055 | 58901 | 152,4 | 57,2 | 31,8 | 50,8 |

Weld disk are not heat treated as provided. Final heat treating is required (material Aisi 4140/DIN17223 to 38-42 HRC)



HANDLE



| COD. | Valid for | A (mm) | B (mm) | C (mm) | D (mm) |
|--------------|--------------|--------|--------|--------|--------|
| 59040 | 58875 | 155,6 | 157 | 25,4 | 182,1 |
| 59041 | 58876, 58878 | | | | |
| 59042 | 58877 | | | | |



DOUBLE SWITCH SYSTEM

| COD. | Valid for |
|--------------|-----------------------------------|
| 59040 | 58875, 58876, 58877, 58878, 58901 |

