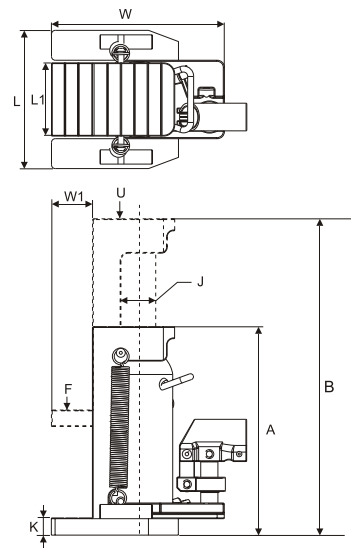


## SHL 手動式油壓千斤頂附爪型

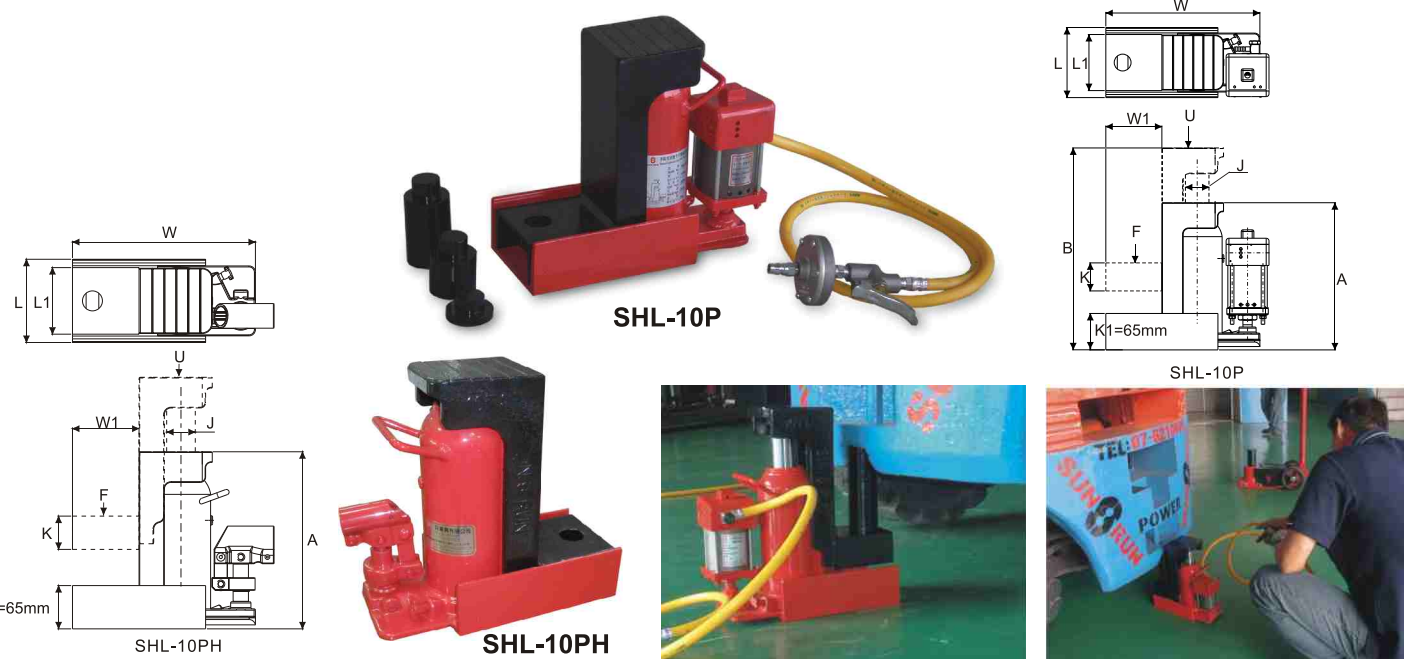
- 碳鋼底座，自動化焊接，品質穩定。
- 主軸採用合金鋼硬銘處理，耐久不生銹。
- 適用於重機械校正水平用，及一般千斤頂無法使用的狹小場所。

## Manual Hydraulic Bottle Jack with Toe-Lift

- ※ Carbon steel base with automatic welding makes stable quality.
- ※ Chrome plated plunger resists corrosion and extends life.
- ※ For heavy equipment lifting or check level with minimum available access.



型號 Model Number	頂部荷重 Top Cap. U (ton)	爪部荷重 Toe-Lift Cap. F (ton)	揚程 Stroke (mm)	本身高 Coll Height A (mm)	伸長總高 Ext. Height B (mm)	主軸直徑 Plunger Dia. J (mm)	底座尺寸 Base Dimensions L x W (mm)	爪高 Height K(mm)	爪塊尺寸 Toe-Lift Base L1 x W1 (mm)	總重 Weight (kg)
SHL-05S	5	2.5	110	230	340	32	152 X 200.5	16	78 X 47	8.5
SHL-10S	10	5	135	277	412	42	185 X 235	22	98 X 55	20.0
SHL-10B	10	5	75	211	286	42	220 X 238	22	130 X 52	18.15
SHL-20S	20	10	150	317	467	55	220 X 240	25	132 X 48	31.5
SHL-20B	20	10	73	239	312	55	220 X 242	25	132 X 46	24.9
SHL-30S	30	15	150	335	486	62	265 X 272	28	149 X 60	44.0
SHL-50S	50	25	150	370	520	85	340 X 354	40	190 X 75	88.5
SHL-10P	10	5	134	266	400	42	125 X 275	50	100 X 100	20.0
SHL-10PH	10	5	134	266	400	42	125 X 275	50	100 X 100	20.0

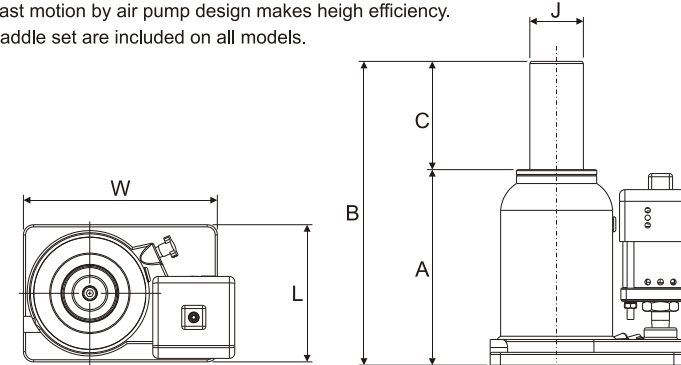


## ST 氣動式油壓千斤頂

- 碳鋼底座，自動化焊接，品質穩定。
- 合金鋼主軸高強度、耐荷重，表面硬銘處理，質輕、易攜帶，具自動回縮功能。
- 各型號均附墊塊組、採用空氣動力泵浦、上昇速度快，讓工作效率更高。

## Hydraulic Bottle Jack with Air Pump

- ※ Carbon steel base with automatic welding makes stable quality.
- ※ Chrome plated plunger with self-return resists corrosion and extends life.
- ※ Fast motion by air pump design makes high efficiency.
- ※ Saddle set are included on all models.



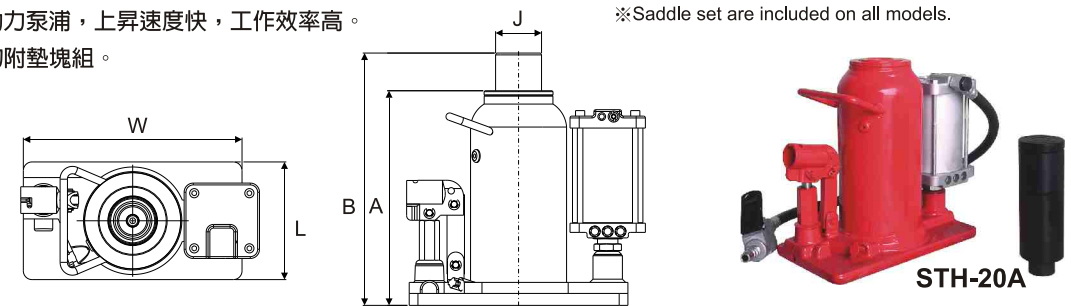
型號 Model Number	能力 Capacity (ton)	揚程 Stroke (mm)	本身高 Min. Height A (mm)	伸長總高 Ext. Height B (mm)	主軸直徑 Plunger Diam. J (mm)	底座尺寸 Base Dimensions L x W (mm)	輔助高 Auxiliary Height (mm)	使用空壓 Air pressure range (kgf/cm <sup>2</sup> )	總重 Weight (kg)
ST-20H	20	344	455	799	50	128 x 181	10,45,80,160	8-12	22.0
ST-20A		150	235	385	50	128 x 181	10,45,80	8-12	16.0
ST-20B		125	210	335	50	128 x 181	10,45,80	8-12	15.0
ST-20C		100	185	285	50	128 x 181	10,45,80	8-12	14.0
ST-30A	30	145	235	380	60	141 x 197	10,45,80	8-12	22.0
ST-30B		120	210	330	60	141 x 197	10,45,80	8-12	21.0
STA-50	50	150	248	398	70	150 x 170	10,45,80	8-12	37.0

## STH 手動/氣動二用型千斤頂

- 碳鋼底座，自動化焊接，品質穩定。
- 合金鋼主軸高強度，耐荷重，表面硬銘處理，質輕、易攜帶，具自動回縮功能。
- 採空氣動力泵浦，上昇速度快，工作效率高。
- 各型號均附墊塊組。

## Dual purpose Jack, Manual/ Pneumatic

- ※ Carbon steel base with automatic welding makes stable quality.
- ※ Chrome plated plunger with self-return resists corrosion and extends life.
- ※ Fast motion by air pump design makes high efficiency.
- ※ Saddle set are included on all models.



型號 Model Number	能力 Capacity (ton)	揚程 Stroke (mm)	本身高 Min. Height A (mm)	伸長總高 Ext. Height B (mm)	主軸直徑 Plunger Diam. J (mm)	底座尺寸 Base Dimensions L x W (mm)	輔助高 Auxiliary Height (mm)	總重 Weight (kg)	使用空壓 Air pressure Rang (kgf/cm <sup>2</sup> )
STH-20A	20	150	235	385	50	128x238	16,45,80	14.5	8-12
STH-20B		125	210	335	50	128x238	16,45,80	13.5	8-12
STH-30A	30	145	240	385	60	141x257	16,45,80	19.6	8-12
STH-30B		120	215	335	60	141x257	16,45,80	18.6	8-12