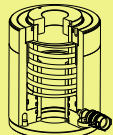


RSCH Series



Capacity:
13-95 ton

Stroke:
8-155 mm

Center Hole Diameter:
19.6-79.0 mm

Maximum Operating Pressure:
700 bar

RSCH 液壓單動，中空型千斤頂

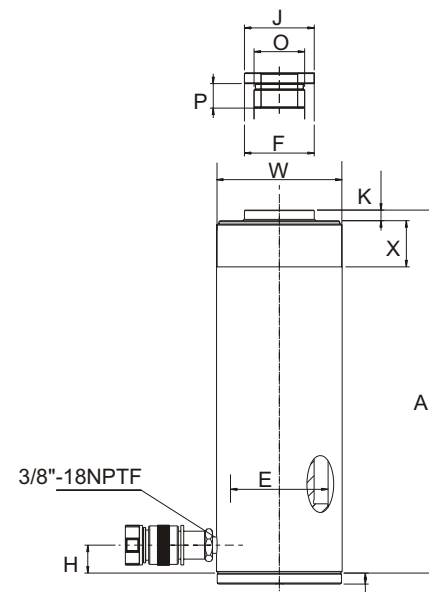
- 中空柱塞設計，適用於推力及拉力之應用。
- 低外型、高揚程適用於緊塞空間。
- 液壓缸在最大行程亦能承載最大荷重。
- 外螺牙便於固定且各均附螺牙保護套。
- 特製中空襯管保護主軸及液壓缸內壁增加產品壽命。
- 主軸及液壓缸內壁硬鉻處理耐磨、抗腐蝕。
- 彈簧回縮。
- 防塵環設計可保護活塞、內徑及襯管避免污染。
- 上螺帽保護主軸超揚昇。
- 表面粉體塗裝美觀抗腐蝕、防銹。
- 各型號均含SQB-3/8UF快速接頭及防塵蓋。

Single-Acting, Hollow Plunger Cylinders

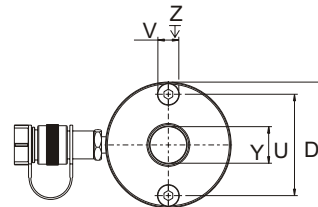
- ※Hollow plunger design allows for pulling and pushing application.
- ※Low profile and longer strokes fit in the tightest space.
- ※Withstands full "dead-end" loads.
- ※Collar threads for easy fixturing and all collar threads have a cap for protection.
- ※Special center tube protect plunger and inner of cylinder increases product life.
- ※Hard chrome plated plunger and inner of barrel resists wear and corrosion.
- ※Spring returning.
- ※Wiper rings protect the piston, bore & tube from contamination.
- ※Stop ring for piston blow-out protection.
- ※Powder coat finish for increased corrosion resistance and antirust.
- ※Come with SQB-3/8UF female coupler & dust cap.

| | |
|--|---------------------------------|
| | 焊提把 Weldable |
| | 吊環螺柱 Eyebolt |
| | 活動提把 Removable strap handles |
| | 螺牙式活動提把 Thread |

| 提把型式 Handle type | |
|--------------------------------|--|
| (S) : 標準配件 standard equipped | |
| (O) : 選配 option | |
| ● 焊提把 Weldable | |
| ★ 吊環螺柱 Eyebolt | |
| ▲ 活動提把 Removable strap handles | |
| ■ 螺牙式活動提把 Thread | |

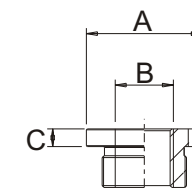


缸底墊塊 Steel baseplate :
12ton serial : 8mm
20~30ton serial : 10mm
60ton serial : 12mm
100ton serial : 16mm



缸底墊塊底座螺孔

This drawing show the base mounting holes of barrel before setting steel base plate.



選配熱處理螺牙中孔墊塊 Optional Heat Treated Hollow Saddles

| 型號-能力 Cylinder Model/Cap. (ton) | 型號 Model Number | 墊塊尺寸 Saddle Dimensions | | |
|--|--------------------|------------------------|--------------|-----------|
| | | A (mm) | B (in) | C (mm) |
| RSCH-202,206 | XKHCH-20 | 53 | 1"-8 | 9 |
| RSCH-302,306 | XKHCH-30 | 63 | 1-1/4"-7 | 9 |
| RSCH-603,606 | XKHCH-60 | 91 | 1-5/8"-5-1/2 | 12 |
| RSCH-1003 | XKHCH-100 | 126 | 2-1/2"-8 | 13 |

*所有 RSCH 系列千斤頂標準配置平滑中孔墊塊 (12噸系列不配置墊塊)
※Smooth hollow saddles are standard on all RSCH series.
(12ton models are not equipped with saddles.)

RSCH-120

- RSCH-120 附有 1/4 NPT 孔配裝 SQB3/8UF 快速接頭
- ※ RSCH-120 includes SQB-3/8UF coupler and has 1/4 NPT port.



| 提把型式 Handle type | 型號 Model Number | 能力 Cylinder Capacity ton(kN) | 外部尺寸 Outer Dimension | | | | | | | |
|---------------------|--------------------|------------------------------------|----------------------|---|---------------------------------------|-----------------------------------|-----------------------------|----------------------------|-------------------------------------|--------------------------------|
| | | | 揚程 Stroke (mm) | 受壓面積 Cylinder Effective Area (cm ²) | 總油量 Oil Cap. (cm ³) | 本身高 Collapsed Height A (mm) | 伸長總高 Ext. Height (mm) | 外徑 Out. Diam. D (mm) | 內徑 Cylinder Bore Diam. E (mm) | 主軸直徑 Plngr. Diam. F (mm) |
| (S) | RSCH-120 | 13(125) | 8 | 17.9 | 14 | 55 | 63 | 69 | 54.1 | 35.1 |
| | RSCH-121 | | 42 | 17.9 | 75 | 120 | 162 | 69 | 54.1 | 35.1 |
| | RSCH-1211 | | 42 | 17.9 | 75 | 120 | 162 | 69 | 54.1 | 35.1 |
| | RSCH-123 | | 76 | 17.9 | 136 | 184 | 260 | 69 | 54.1 | 35.1 |
| ● | RSCH-202 | 20(215) | 49 | 30.7 | 150 | 162 | 211 | 98 | 73.1 | 54.1 |
| ● | RSCH-204 | | 102 | 30.7 | 311 | 242 | 344 | 98 | 73.1 | 54.1 |
| ● | RSCH-206 | | 155 | 30.7 | 476 | 306 | 461 | 98 | 73.1 | 54.1 |
| ● | RSCH-302 | 30(326) | 64 | 46.6 | 298 | 178 | 242 | 114 | 88.9 | 63.5 |
| ● | RSCH-304 | | 102 | 46.6 | 473 | 233 | 335 | 114 | 88.9 | 63.5 |
| ● | RSCH-306 | | 155 | 46.6 | 722 | 330 | 485 | 114 | 88.9 | 63.5 |
| ▲ | RSCH-603 | 60(576) | 76 | 82.3 | 626 | 247 | 323 | 159 | 123.9 | 92.2 |
| ▲ | RSCH-606 | | 153 | 82.3 | 1259 | 323 | 476 | 159 | 123.9 | 92.2 |
| ▲ | RSCH-1003 | 95(931) | 76 | 133.0 | 1011 | 254 | 330 | 212 | 165.1 | 127.0 |

| 外部尺寸 Outer Dimension | | | 牙紋尺寸 Threads Dimension | | | | | 底座螺孔 Base Mounting Holes | | | 總重 Weight (kg) |
|---|--------------------------------|---|---|---|---------------------------------|--|-------------------------------------|-------------------------------|--------------------------|--------------------------------|----------------------|
| 底部前進油孔位置 Cyl. Base to Advance Port H (mm) | 墊塊直徑 Saddle Diam. J (mm) | 凸出高度 Saddle Protr. from Plngr. K (mm) | 主軸內牙 Plunger Internal Thread O (in) | 內牙深度 Plunger Thread Length P (mm) | 油缸外牙 Collar Thread W (in) | 外牙長度 Collar Thread Length X (mm) | 中孔直徑 Center Hole Diam. Y (mm) | 底孔孔距 Bolt Circle U (mm) | 底座螺紋 Thread V (in) | 螺紋深度 Thread Depth Z (mm) | |
| 9 | — | — | 3/4"-16UN | 16 | 2 3/4"-16 | 30 | 19.6 | 50.8 | 5/16"-18UNC | 9.0 | 1.70 |
| 19 | — | — | — | — | 2 3/4"-16 | 30 | 19.6 | 50.8 | 5/16"-18UNC | 9.0 | 3.00 |
| 19 | — | — | 3/4"-16UN | 16 | 2 3/4"-16 | 30 | 19.6 | 50.8 | 5/16"-18UNC | 9.0 | 3.00 |
| 19 | — | — | — | — | 2 3/4"-16 | 30 | 19.6 | 50.8 | 5/16"-18UNC | 12.7 | 4.60 |
| 19 | 54 | 6.9 | 1 9/16"-16UN | 19 | 3 7/8"-12 | 38 | 26.9 | 82.6 | 3/8"-16UNC | 9.4 | 8.20 |
| 19 | 54 | 6.9 | 1 9/16"-16UN | 19 | 3 7/8"-12 | 38 | 26.9 | 82.6 | 3/8"-16UNC | 9.4 | 10.50 |
| 19 | 54 | 6.9 | 1 9/16"-16UN | 19 | 3 7/8"-12 | 38 | 26.9 | 82.6 | 3/8"-16UNC | 9.4 | 14.60 |
| 22 | 63 | 9.7 | 1 13/16"-16UN | 22 | 4 1/2"-12 | 42 | 33.3 | 92.2 | 3/8"-16UNC | 14.0 | 11.55 |
| 22 | 63 | 9.7 | 1 13/16"-16UN | 22 | 4 1/2"-12 | 42 | 33.3 | 92.2 | 3/8"-16UNC | 14.0 | 14.75 |
| 25 | 63 | 9.7 | 1 13/16"-16UN | 22 | 4 1/2"-12 | 42 | 33.3 | 92.2 | 3/8"-16UNC | 14.0 | 22.45 |
| 31 | 91 | 12.7 | 2 3/4"-16UN | 19 | 6 1/4"-12 | 48 | 53.8 | 130.3 | 1/2"-13UNC | 14.0 | 29.70 |
| 31 | 91 | 12.7 | 2 3/4"-16UN | 19 | 6 1/4"-12 | 48 | 53.8 | 130.3 | 1/2"-13UNC | 14.0 | 37.00 |
| 38 | 126 | 12.7 | 4"-16UN | 25 | 8 3/8"-12 | 60 | 79.0 | 177.8 | 5/8"-11UNC | 19.0 | 53.50 |