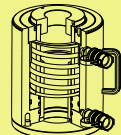


## RSARH Series



Capacity:  
**30-150 tons**

Stroke:  
**50-254 mm**

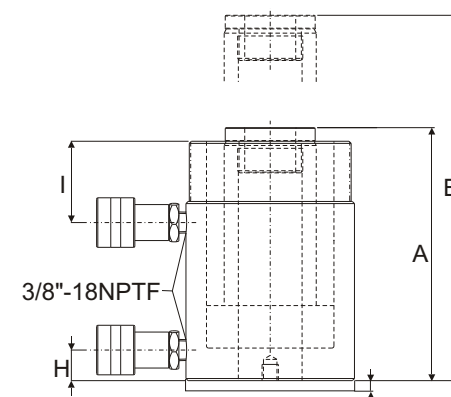
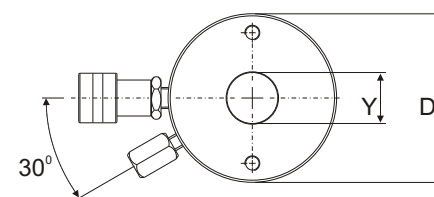
Maximum Operating Pressure:  
**700 bar**

## RSARH-Series 液壓雙動中空，鋁合金千斤頂

- 鋁合金設計，質輕易攜帶。
- 7075-T6鋁合金材質，能以最小重量承最大能力。
- 缸底墊塊預防荷重的危險。
- 主軸及缸壁內外陽極處理防損耐腐且延長使用壽命。
- 內置安全洩壓閥防止超壓損壞。
- 特殊軟質環設計，防止主軸偏心荷載；避免磨耗刮傷油缸。
- 多層油封設計，預防金屬材質間互相磨擦，防止側向荷載受損。
- 上螺帽保護主軸超揚昇。
- 缸底墊塊、提把及鞍座均可拆卸，可在空間受限時拆除使用。
- 各型號均含SQB-3/8UF快速接頭及防塵蓋。
- 外表雷射刻字。

### Double-Acting, Hollow Plunger Aluminum Cylinders

- ※ Lightweight, aluminum design for maximum portability.
- ※ 7075-T6 Aluminum alloy components for maximum strength and minimum weight.
- ※ Steel base plate protection against load-induced damage.
- ※ Anodizing treatment plunger, surfaces and inner of barrel resists damage and extends cylinder life.
- ※ Built-in safety valves protect against over pressurizing.
- ※ Special soft ring reduces wear caused by off-center loads.
- ※ Composite bearings prevent metal-to-metal contact, increasing cylinder life and resistance to side-load.
- ※ Stop ring for piston blow-out protection.
- ※ Removable hardened saddle, handle and steel baseplate, which can be removed to use in limit space.
- ※ SQB-3/8UF coupler and dust cap are included on all models.
- ※ Laser carve on surface.



缸底墊塊  
Steel base plate :  
30tons serial : 10mm  
50tons serial : 12mm  
100tons serial : 16mm  
150tons serial : 18mm

缸底墊塊前底座螺孔圖示

This drawing show the base mounting holes of barrel before setting steel base plate.



### 墊塊/鞍座 Saddle

RSARH-系列 均配有高硬度外牙中空平墊塊。  
RSARH-Series are equipped with bolt-on hardened removable steel hollow saddle.



### 缸底墊塊 Steel Base Plate

- 缸底墊塊作用於保護油壓缸底座免於損壞；不可任意移除。
- 千萬不要使用這些螺孔來安裝其他配件或設備在油壓缸上。
- ※ Do not remove steel base plate in order to protect the cylinder base.
- ※ No attachment to be used on base holes of the Aluminum cylinders.



### 鋁 VS. 鋼性質說明

#### Aluminum vs. Steel characteristic

- 鋁和鋼材的不同，在於鋁具較低的金屬疲乏。意即鋁合金油壓缸不適用於高重複性使用。
- ※ Due to different steel & Aluminum characteristics, it is strongly recommended not to be used for high-cycle applications

提把型式 Handle type
(S) : 標準配件 standard equipped
(O) : 選配 option
● 焊提把 Weldable
★ 吊環螺栓 Eyebolt
▲ 活動提把 Removable strap handles
■ 螺牙式活動提把 Thread

提把型式 Handle type	型號 Model Number
(S)	
■	RSARH-302
■	RSARH-306
■	RSARH-3010
■	RSARH-502
■	RSARH-504
■	RSARH-506
■	RSARH-5010
■	RSARH-1002
■	RSARH-1004
■	RSARH-1006
■	RSARH-10010
■	RSARH-1502
■	RSARH-1506
■	RSARH-15010

外部尺寸 Outer Dimension														
能力 Cylinder Capacity	揚程 Stroke	最大出力 Max. Cylinder capacity		受壓面積 Cylinder Effective Area		使用油量 Oil Capacity		本身高 Min. Height	伸長總高 Ext. Height	外徑 Out. Diam.	底部前進油孔位置 Cyl. Base to Adv. Port	頂部回油孔位置 Cyl. Top to Return Port	中孔直徑 Center Hole Diam.	重量 Weight
		推 Push	拉 Pull	推 Push	拉 Pull	推 Push	拉 Pull							
ton(kN)	(mm)	(kN)		(cm <sup>2</sup> )		(cm <sup>3</sup> )		A (mm)	B (mm)	D (mm)	H (mm)	I (mm)	Y (mm)	(kg)
30 (287)	50.00	287	147	41.0	21.0	235.2	106.6	177.8	228.6	139.7	44.45	44.45	38.1	9.08
	152.00	287	147	41.0	21.0	705.5	319.8	279.4	431.8	139.7	44.45	44.45	38.1	12.71
	254.00	287	147	41.0	21.0	1175.9	533.0	381.0	635.0	139.7	44.45	44.45	38.1	15.89
50 (465)	50.00	465	155	66.40	22.12	356.04	112.5	177.8	228.6	190.5	44.45	44.45	53.98	14.98
	102.00	465	155	66.40	22.12	712.42	225.0	228.6	330.2	190.5	44.45	44.45	53.98	18.61
	152.00	465	155	66.40	22.12	1068.6	337.5	279.4	431.8	190.5	44.45	44.45	53.98	22.25
100 (916)	50.00	916	352	130.8	50.31	680.93	255.8	254.0	304.8	279.4	63.5	63.5	88.9	38.59
	102.00	916	352	130.8	50.31	1361.9	511.7	304.8	406.4	279.4	63.5	63.5	88.9	42.22
	152.00	916	352	130.8	50.31	2042.8	767.5	355.6	508.0	279.4	63.5	63.5	88.9	46.31
150 (1421)	50.00	1421	406	203.0	58.05	1004.7	294.5	254.0	304.8	304.8	63.5	63.5	88.9	49.49
	152.00	1421	406	203.0	58.05	3013.2	1371.1	355.6	508.0	304.8	63.5	63.5	88.9	59.93
	254.00	1421	406	203.0	58.05	5023.3	1473.0	457.2	711.2	304.8	63.5	63.5	88.9	70.82